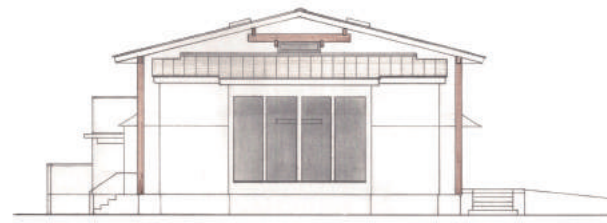


New hi-b.a. Campsite Appeal



Chapel



Exterior view of the chapel side

Estimated Construction Costs:

300,000,000 JPY (2,400,000 USD) - Goal For Fundraising

Initial Fundraising Period: May 2023 - September 2024

Construction Commencement : September 2024 (planned)

Construction Completion : March 2026 (planned)

NB : Construction will only begin when 90% of funds have been raised.

Architect : Masaaki Kinoshita Architects



You can donate by credit card from the hi-b.a. website.
← QR code for credit card & bank account page

URL <https://www.hi-ba.com/>

Please specify 'campsite building designation' when making a donation.



←For tax deductible donations from North America, please check the details through the QR code.

URL <https://send.org/give/projects/japan-hiba-camp-rebirth>

People who agree

(五十音順、敬称略) ※所属や教団名は、原則ご自身がお申し出くださった通りに記載しています。

朝岡勝 (日本同盟基督教団理事長 / 学校法人東京キリスト教学園理事長・学園長)、天野弘昌 (日本アッセンブリーズ・オブ・ゴッド教団理事)、安藤理恵子 (玉川聖学院学院長)、池袋台湾教会、池谷孝雄 (支援会理事長)、市原登記雄 (株おいらんく嘱託職員)、稲葉裕 (支援会理事)、井之上薫 (福岡聖書教会協力牧師)、岩井清 (平塚福音キリスト教会顧問牧師)、岩上敬人 (JEA 総主事)、宇賀飛翔 (OneHope Japan ディレクター)、右近勝吉 (元祖便利屋)、内田和彦 (JICA 前橋キリスト教会牧師)、遠藤稔 (東栄福音キリスト教会牧師)、大城節子 (沖縄バプテスト連盟 ジョイチャペル主任牧師)、大田裕作 (アンテオク宣教会 総主事)、大瀧恵理也 (小平聖書キリスト教会牧師)、太田和功一、大橋秀夫 (関西 hi-b.a. を支える会委員)、長下部美香 (支援会理事)、我喜屋恵寿輝 (医師)、郭寛城 (池袋台湾教会牧師)、梶川登 (支援会理事)、加藤一也 (豊橋ホサナキリスト教会主任牧師)、加藤信 (はこぶね便事務局長 取締役社長)、加藤勇介 (東広島めぐみ教会牧師)、金澤昭夫 (支援会理事)、神山みさ (ゴスペルフォークシンガー)、菊池総八郎 (宗教法人会員) 木村恵子 (支援会委員)、久能木証 (宗教法人会員)、隈上正敏 (単立 山室チャペル牧師)、Kraai Family、国府田祐人 (日本基督教団 荒川教会牧師)、郷家一二三 (日本ホーリーネス教団 坂戸キリスト教会牧師)、小坂田環暢 (主都福音キリスト教会牧師)、小林泰輔 (キリスト伝道隊総務委員長)、小牧常松 (支援会理事)、竿代照夫・皓子 (インマヌエル行徳駅前教会協力牧師)、佐野耕一 (堀ノ内キリスト教会牧師)、Samuell Soung (クリスチャンアーティスト)、サルキーニ (ゴスペルロックバンド)、Randy & Debby Sheagley (TTW キューバミニストリー / マイヤー宣教師娘)、GMS 総会世界宣教会、篠田真紀子 (浅草教会牧師)、渋谷悠 (劇作家)、清水清美 (医師)、須田毅 (西郷キリスト福音教会牧師)、関野祐二 (聖契神学校校長)、宋均鎬 (GMS 総会世界宣教会日本代表)、高橋一樹 (活水聖書学院 学院長代行)、高橋和義 (クリスチャンフェロシシップ風の会代表)、高橋恵一郎 (女子聖学院チャペル・宗教部長)、高橋潤 (銀座教会牧師)、田辺岩雄 (イムマヌエル総合伝道団千葉キリスト教会 主任牧師)、田村治郎 (グレース宣教会牧師)、篤田聡毅 (インマヌエルキリスト教会牧師)、渡真利彦文 (胡屋バプテスト教会 主任牧師)、富田健斗 (宗教法人会員)、富所正史 (社会保険労務士アスリート事務所 所長)、永田信昭 (おゆみ野キリスト教会 土気チャペル牧師)、中村基裕 (キリスト教たんぽぽ教会 牧師)、武川仁哉 (岩倉キリスト教会牧師)、野寺博文 (赤羽聖書教会牧師)、花里守二 (一宮クリスチャンチャーチ牧師)、林明信 (那覇めぐみ教会牧師)、原雅幸 (キリスト教たんぽぽ教会 牧師)、武川仁哉 (岩倉キリスト教会牧師)、福田崇 (日本ウィックリフ聖書翻訳協会)、藤岡太一郎 (宗教法人会員)、藤崎博 (ひばりが丘聖書教会牧師)、星加優和 (東京フリー・メソジスト教団 守谷キリスト教会牧師)、細江誠真 (可児福音教会牧師)、堀川樹・果菜 (日本基督教団 亀戸教会牧師)、Mark Joseph (ハリウッドプロデューサー)、前島常郎 (ナインの会)、松原智 (福音伝道教団笹塚キリスト教会牧師)、三木健 (クライストコミュニティ宝塚チャペル牧師)、水口功 (JEA 理事長)、三橋与志哉 (越谷福音自由教会牧師)、峯 真理杏 (リア・ワークショップ)、宮内誠二 (福岡福音自由教会牧師)、宮平満 (社団法人グレイス理事長)、山口耕司 (平塚福音キリスト教会牧師)、山口武春 (ニューホープ横浜牧師)、山口陽一 (東京基督教大学学長)、山名高広 (日本基督教団玉川教会伝道師)、山本陽一郎 (日本同盟基督教団 青年局長)、楊和明 (東京国際基督教代表役員)、吉澤慎也 (KGK 総主事)、LYRE (クリスチャンアーティスト)、渡辺健 (青山学院高等部部長)



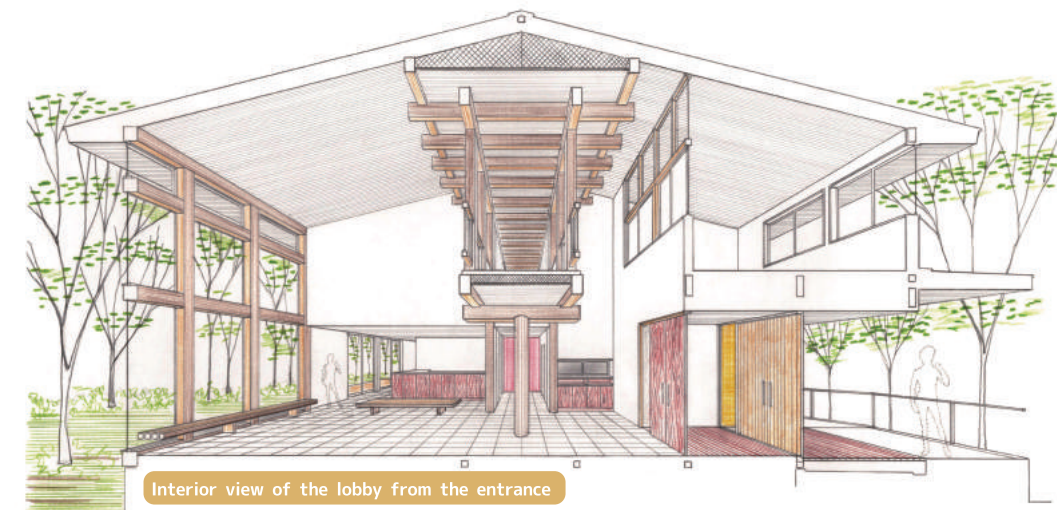
【Camp Construction Website】

←You can check the latest camp construction donation status by scanning the QR code here

hi-b.a.Camp Site

〒299-4314 1987-1
arachi ichiomiyamachi cyouseigun chibaken
TEL:0475-42-3091

Plans for the Renewal of hi-b.a' s. Chiba Campsite



Interior view of the lobby from the entrance

"Remember your creator in the days of your youth"
Ecc1 12:1



**“When highschoolers are born again,
Japan’ s future will be renewed”**

hi-b.a. staff and students would like to sincerely thank all our supporters for their faithful prayers and encouragement to date.

Hi-b.a. started out in 1951 as an interdenominational evangelism organisation focused on outreach to Japanese highschoolers. The following year, in the summer of 1952, hi-b.a. purchased land near the beach at Kujukuri-hama in Chiba Prefecture, and started its camp ministry to highschoolers, thanks to the many missionaries and their assistants who laboured by hand to construct rustic cabins and other buildings.

Throughout the years, this campsite has been instrumental in introducing numerous highschoolers to Jesus Christ, and many put their trust in Him. Many have also subsequently been led into full-time Christian ministry.

To continue our ministry, we need a new camp site. Given the ageing of the current buildings at the campsite, our fervent prayer is that God will open the way for the construction of new purpose-built facilities, to enable hi-b.a to continue its ministry to highschoolers, both now and in the future.

As we earnestly bring the need for the renewal of the facilities at the campsite before the Lord, we are also very aware that we cannot accomplish this project without the prayers and support of all those who carry a burden for the next generation of young people, that they too will come to share our faith.

Preliminary planning for the new campsite construction was started In 2019, and is now approaching its final stages. We are committed to ensuring that the new facilities will provide a place where highschoolers can both meet Jesus and enjoy fun times and friendships with others in the faith. Our vision is that many highschoolers will come to know Jesus as their Lord. We hope you will join us in helping to bring that vision to fruition..

May the Lord grant you every blessing and good health.

May 2023

Takao Nakadai, President, hi-b.a. Board of Directors
Ryutaro Kawaguchi, hi-b.a. Head of Staff



Highschoolers meet Jesus



Highschoolers become devoted followers of Jesus

Highschoolers become ministers of the gospel



hi-b.a Campsite Cycle of Evangelism

hi-b.a. campsite: Changing the Lives of Young People

Pastor, JECA Maebashi Christ Church

Kazuhiko Uchida



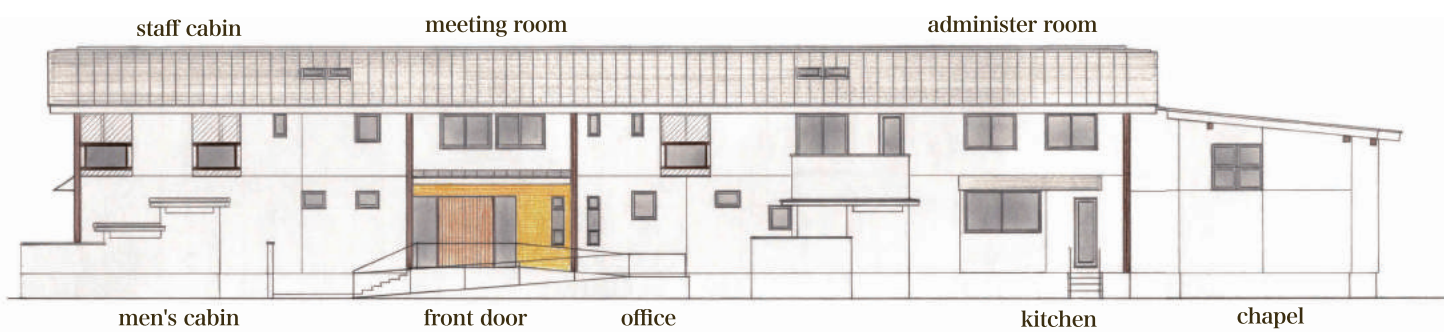
In the summer of 1962, when I was in the 10th grade, my life changed. A school friend invited me to a hi-b.a. meeting at Urawa and following that, I went along to a hi-b.a. camp at Kazusa-Ichinomiya. For the first time, I saw how Christians lived, up-close and personal. I decided to believe in Jesus. It has been 61 years since then—what an incredible thought. That small decision I made when I was 15 was the beginning of everything. It is a great wonder to me, and I have nothing but gratitude. If it were not for that camp, I would not be who I am now.

Fast forward to the summer of 2018, I was invited to an Alumni Camp, which gave me the opportunity to revisit the campsite for the first time in many years. The facilities, grounds and the pond ("Lake Galilee" as we used to call it) were exactly as I remembered them...which is problematic! They have aged as much as I have. I realised something had to be done.

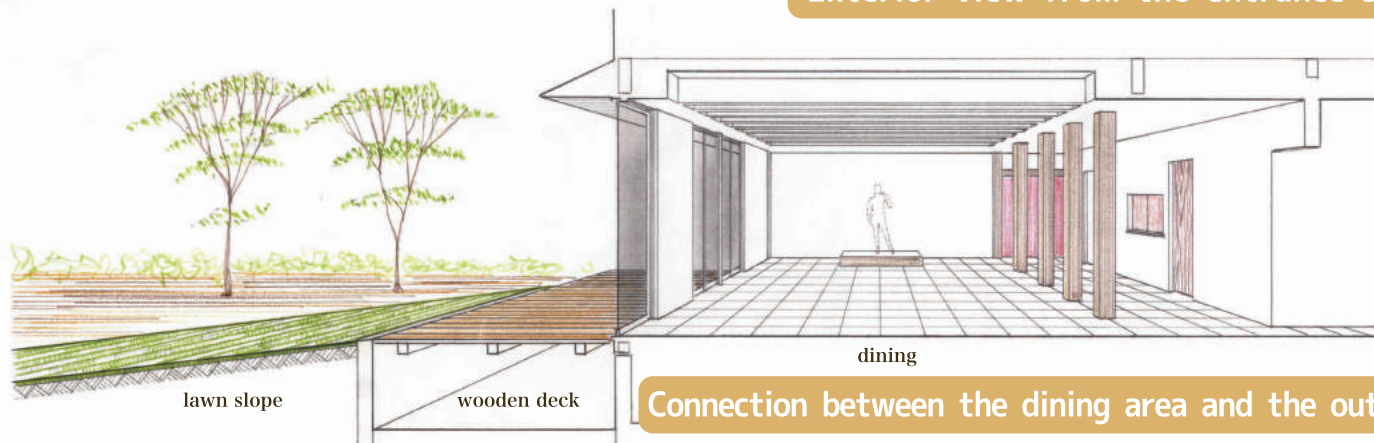
And that "something" is now taking shape with the recent drafting of plans for the renewal of the campsite. It is my sincere hope that, through the prayers and support of many, this project will become a reality. How exciting to think that the new campsite facilities will provide a place where many highschoolers can come to know Jesus and embark on a new life of blessing.

We look forward to having you join us in this venture.

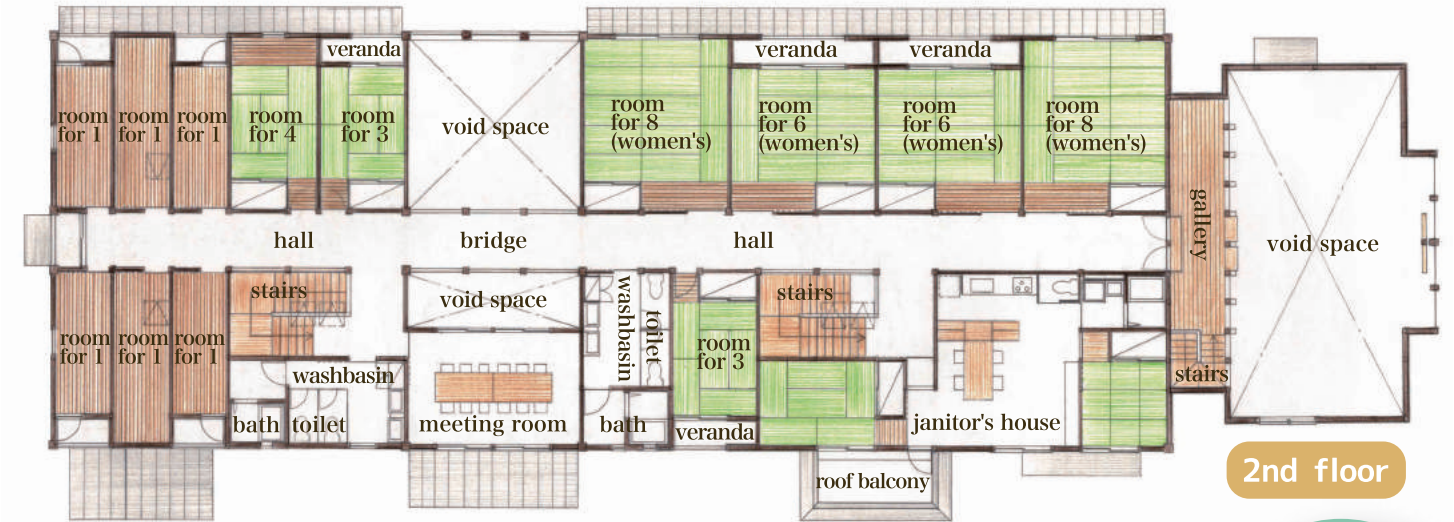
Isa 43:19 Behold, I am doing a new thing; now it springs forth, do you not perceive it? I will make a way in the wilderness and rivers in the desert.



Exterior view from the entrance side

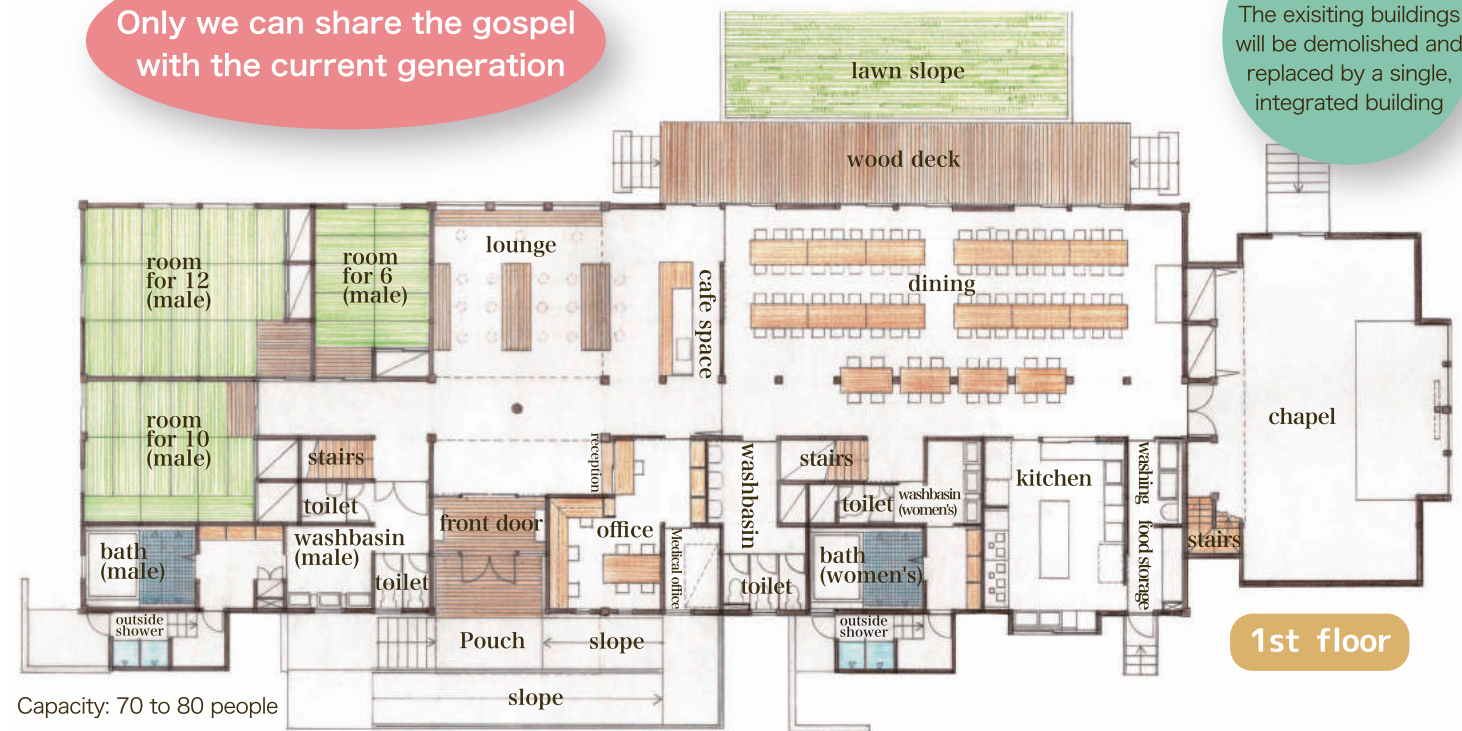


Connection between the dining area and the outside



2nd floor

Only we can share the gospel with the current generation



1st floor

Grand plan
The existing buildings will be demolished and replaced by a single, integrated building

Capacity: 70 to 80 people

Brief Design for the New Facilities at the hi-b.a. Campsite

The hi-b.a. campsite grounds cover a vast 9,256m², but rather than scattering the various facilities across the site as a whole, Our plan is to integrate them into one large building which will enable the reduction of construction costs, ensure a high level of functionality, and facilitate the smooth movement of people.

The new facility will comply with the fire-resistance code, and be built over two storeys using traditional Japanese construction methods so as to capture the warmth of wood. The roof will be shaped like a bird spreading its wings, and the interior, reflecting the design of the roof, will be very spacious, with a variety of interconnected rooms, which together, will create a flexible and welcoming space.

When standing in the lounge area, all the other areas of the building— the boy's rooms, the girl's rooms, the staff area, the canteen and the chapel – will be visible through the wide expanse of the atrium. The building will also incorporate many large windows and doors which will allow views of the trees, the pond, and recreational facilities within the camp grounds. (Masaaki Kinoshita Architects)

